

Anti-Human IL-8 Secondary Antibody
Rabbit Polyclonal, Unconjugated
Catalog # ASR3289**Specification**

Anti-Human IL-8 Secondary Antibody - Product Information

Description	Anti-Human IL-8 (RABBIT) Antibody
Host	Rabbit
Conjugate	Unconjugated
Target Species	Human
Reactivity	Human
Clonality	Polyclonal
Application	WB, IP, E, IC
Application Note	ELISA 1:1,000-1:5,000;Western Blot 1:500-1:2,000;Immunochemistry 1:400-1:800ImmunoPrecipitation:1:400-1:800
Physical State	Liquid (sterile filtered)
Host Isotype	Antiserum
Buffer	None
Immunogen	The whole rabbit serum was prepared by repeated immunizations with recombinant human IL-8 produced in E.coli.
Stabilizer	None
Preservative	None

Anti-Human IL-8 Secondary Antibody - Additional Information**Shipping Condition**

Dry Ice

Purity

Anti-IL 8 antiserum has been heated to 56°C for 30 minutes. The antiserum detects recombinant and native IL-8 present in body fluids and cell supernatants in ELISA. Although likely to be functional, this antiserum has not been evaluated in other assays, including neutralization and immunohistochemistry.

Storage Condition

Store anti-IL8 antibody at -20° C prior to opening. Aliquot contents and freeze at -20° C or below for extended storage. Avoid cycles of freezing and thawing. Centrifuge product if not completely clear after standing at room temperature. This product is stable for several weeks at 4° C as an undiluted liquid. Dilute only prior to immediate use.

Precautions Note

This product is for research use only and is not intended for therapeutic or diagnostic applications.

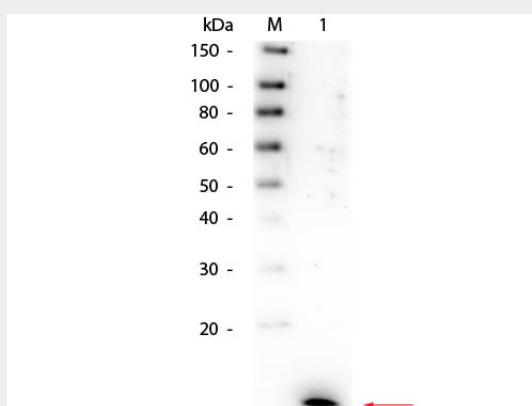
Anti-Human IL-8 Secondary Antibody - Protein Information

Anti-Human IL-8 Secondary Antibody - Protocols

Provided below are standard protocols that you may find useful for product applications.

- [Western Blot](#)
- [Blocking Peptides](#)
- [Dot Blot](#)
- [Immunohistochemistry](#)
- [Immunofluorescence](#)
- [Immunoprecipitation](#)
- [Flow Cytometry](#)
- [Cell Culture](#)

Anti-Human IL-8 Secondary Antibody - Images



Western Blot of Rabbit anti-Human IL-8 Antibody. Lane 1: Recombinant Human IL-8. Load: 50 ng per lane. Primary antibody: Rabbit anti-Human IL-8 Antibody 1:1,000 overnight at 4°C. Secondary antibody: HRP Goat-a-rabbit secondary antibody at 1:40,000 for 30 min at RT. Block: MB-070 for 30 min at RT. Predicted/Observed size: 11 kDa, 11 kDa for Human IL-8.

Anti-Human IL-8 Secondary Antibody - Background

Interleukin-8 is a chemokine produced by macrophages and other cell types such as epithelial cells. Human IL-8 (CXCL8) antibody is commonly used in many experiments focused around inflammation. Anti-IL-8 antibody is ideal for investigators involved in Cancer, Immunology and Cardiovascular research.